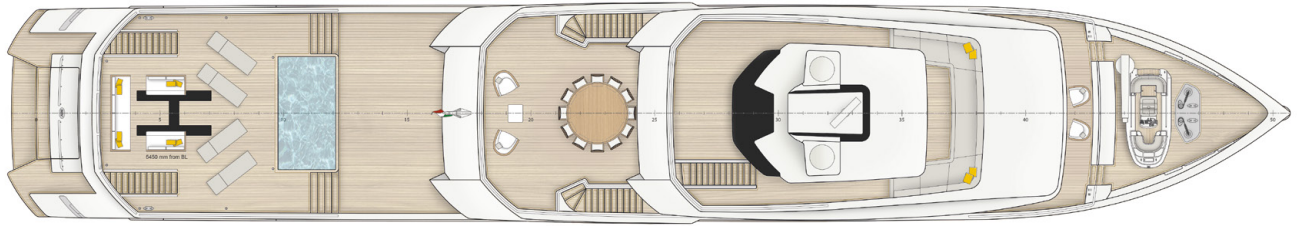


52M SUPPLY VESSEL YACHT PHI DESIGN LAB
TECHNICAL DATA

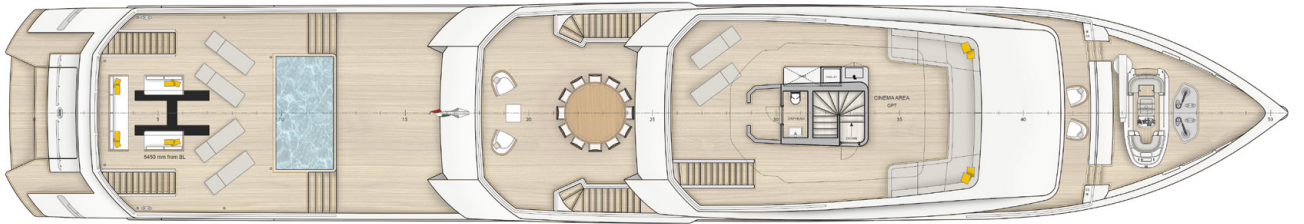
PROFILE



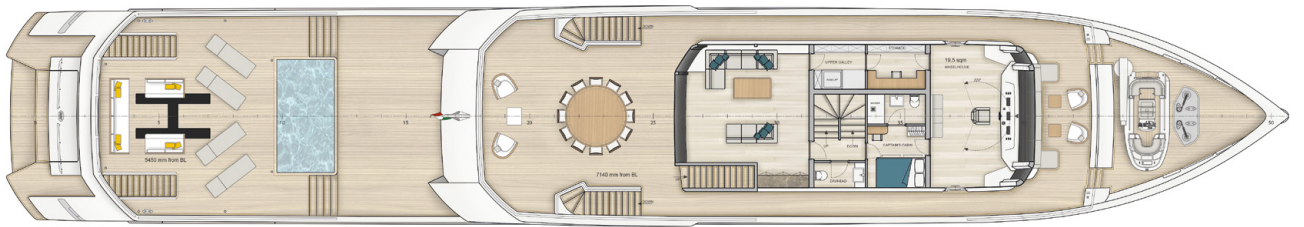
TOP VIEW



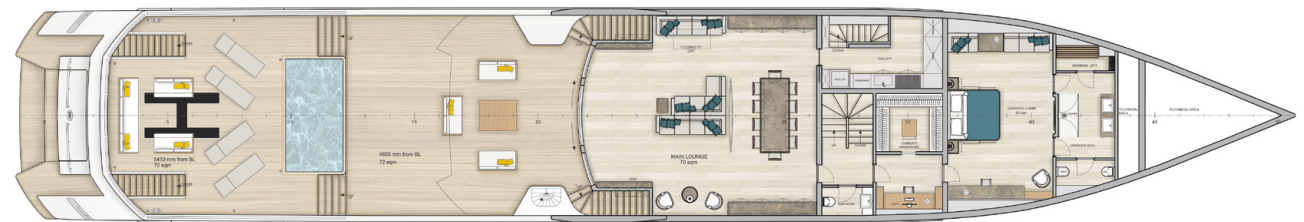
SUN DECK



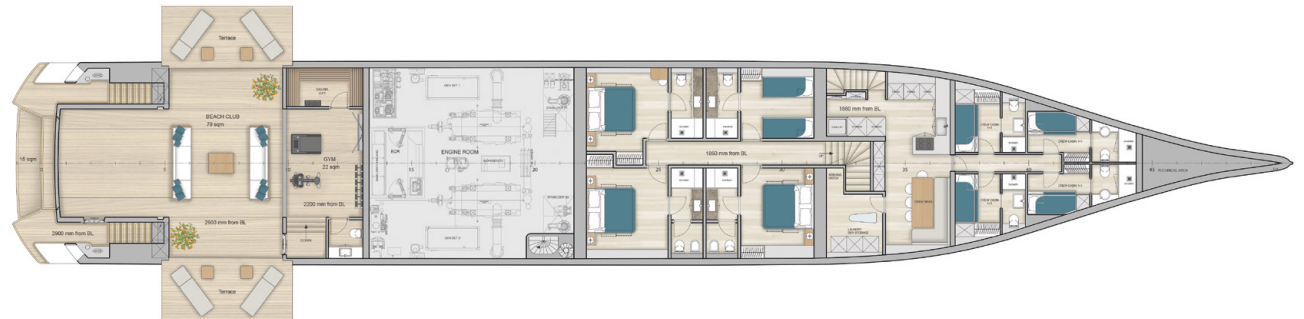
UPPER DECK



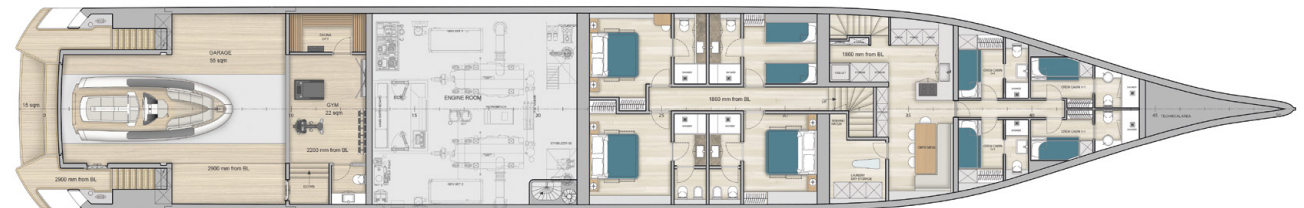
MAIN DECK



LOWER DECK
BEACH



LOWER DECK
GARAGE



ENGINES 2 x MTU 12V2000M72, 1080 kW 2250rpm 1470 HP
2 x gearboxes ZF 3350 ratio 5,00:1

SPEED Maximum speed 16 knots
Cruising speed 12 knots

RANGE Autonomy at 10 knots 4.500 n.m.
(Nautical Miles)

GUESTS 10 - CREW 9

MAIN SIZES LoA: Length overall 52,00 m 170 ft 7 in
Lwl: Waterline Length 50,70 m 166 ft 4 in
Maximum Beam 8,25 m 27 ft 1 in
Depth 4,30 m 14 ft 1 in
Moulded draft 2,20 m 7 ft 3 in
Gross tonnage 499 GRT

CERTIFICATION RINA C, * HULL, •MACH, Y, unrestricted navigation

The Technical data, performances, designs and graphic reproductions are purely indicative, are not contractual, shall not constitute in any circumstances whatsoever any contractual offer by the shipyard and refer to European standard models of motor yachts built by the shipyard. The only valid technical reference or description is the specific parameters of each motor yacht cited only on purchase of the same. Therefore the only indications binding on the seller are contained solely in the Contract and in the relevant Technical Specification.